

# NEWSLETTER

Vol. 03 December 2024

## THE FUTURE IN IMAGES



**ReDIB**  
Distributed Biomedical  
Imaging Network



## COMPETITIVE OPEN ACCESS CALL. REDIB-2402.

**9 proposals** were accepted in the nodes  
**13 essential facilities** were requested  
78 % of the proposals came from research  
institutes.  
Human 3 T MRI and PET-MRI studies were  
the most requested.



## PRESENCE OF REDIB IN EVENTS

**cniC en la Semana  
de la Ciencia  
y la Innovación**

del 7 al 12 de noviembre  
de 2024

### XXIV Science and Innovation Week at CNIC.

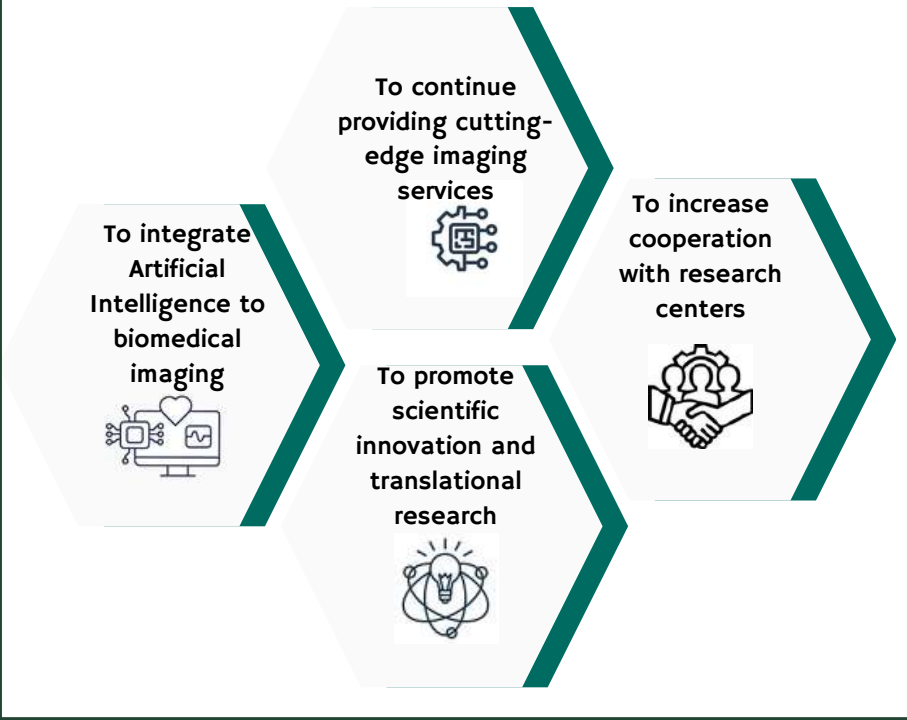
Motivating and interesting talks. An excellent space for disseminating ReDIB activities among children, young people and adults.







✉ info@redib.net  
🌐 <https://www.redib.net/home>  
📧 @IctSRedib



## 2025-2028 REDIB STRATEGIC GOALS



## TO REACH GOALS

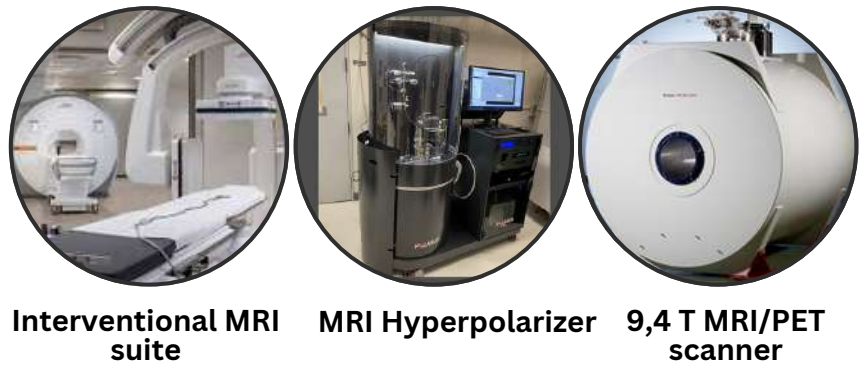
-  Four integrated nodes with a single management structure and an experience and skilled leadership.
-  The existence of new and upgraded facilities across the nodes
-  Expert support driven by an experienced scientific staff made up of a multidisciplinary team
-  Different access (competitive and to demand) are provided, with full to self-services modalities



PROPOSED OBJECTIVE	INDICATOR
To stay providing cutting-edge imaging services	Percentage of diagnostic accuracy
	Percentage of compatibility with modern software
	Percentage of user satisfaction in demands and expectations
	Number of tasks completed among those proposed
	Percentage of response to request
To increase cooperation with research centers	Number of new contacts with international platforms
	Number of new external users
	Number of new cooperation agreement signed
To promote scientific innovation and translational research	Number of results which directly could be applied in the practice
	Number of clinical trials presented to call
	Number of patents and registrations
To integrate AI to biomedical imaging	Number of AI algorithms developed
	Number of projects that integrates the use of AI developments

Imaging La Fe group also focuses on developing and validating predictive models while concurrently creating extensive, structured, and standardized image repositories containing associated clinical, pathological, and molecular information.

## PROJECTED OUTSTANDING FACILITIES

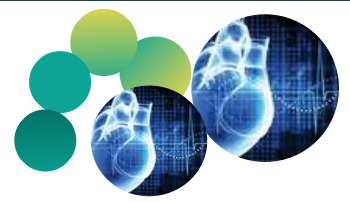


Interventional MRI suite

MRI Hyperpolarizer

9,4 T MRI/PET scanner

## CORE VALUES



-  **Integrity**  
ReDIB is responsible for its services and operations, involving the highest standards of ethics
-  **Sustainability**  
ReDIB is committed to workable practices and principles, minimizing environmental impacts
-  **Commitment**  
ReDIB can hurdle difficulties, and do its best, even in no-comfort zones, to satisfy clients and stakeholders
-  **Excellence**  
ReDIB prioritizes scientific excellence in the services provided by professional and technical staff

